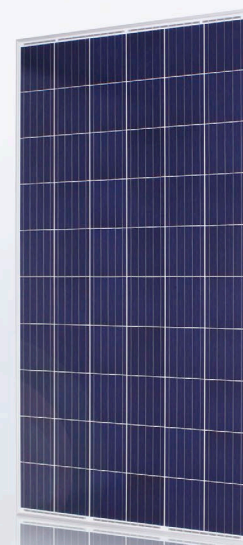




**EEEEASILY
MORE.**

Excellent. Efficient. Expert.



The Value-Added Modules of the IBC SOLAR Line.

IBC PolySol 275 CS5, 280 CS5

First-class solar modules made of polycrystalline silicon



25 year linear power and 15 year product warranty¹



Positive power tolerance (-0/+5 Wp)



Increased mechanical stability (5400 Pa)



German warrantor



100% tested quality



Maximum transparent ARC glass

IBC SOLAR – your partner for energy solutions

IBC SOLAR AG has had a successful presence in the photovoltaic market for **more than 35 years** and is one of the leading international energy companies providing high-performance system solutions in every size and for every application with intelligent photovoltaic systems. The **economic strength and financial independence** is confirmed by globally recognised rating agencies.

Smart Systems for Solar Power thanks to perfectly matched components. **More than 1,000 highly qualified partners** around the world, as well as **more than 4,200 megawatts of installed power**, which supply **around 2 million people with solar power**, underline the high level of expertise of IBC SOLAR.

IBC SOLAR – leading PV system integrator from Germany since 1982!

TECHNICAL DATA

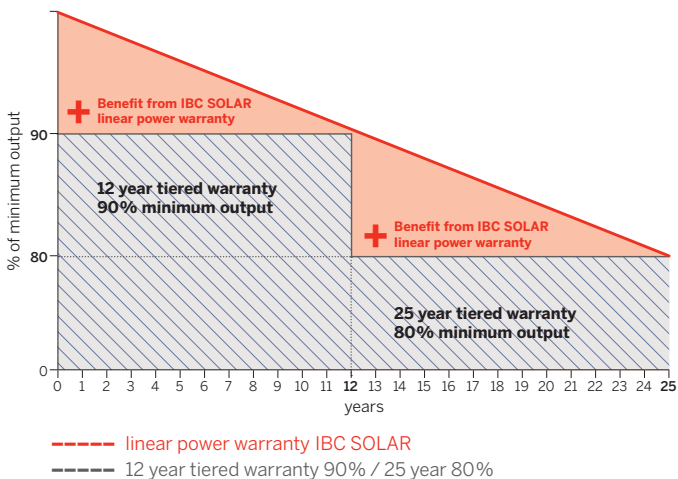
IBC PolySol	275 CS5	280 CS5
Article number	2203800031	2203800033

Electrical data (STC):		
STC Power Pmax (Wp)	275	280
STC Nominal Voltage Umpp (V)	31.8	32.1
STC Nominal Current Imp (A)	8.67	8.77
STC Open Circuit Voltage Uoc (V)	39.0	39.3
STC Short Circuit Current Isc (A)	9.23	9.26
Module Efficiency (%)	16.8	17.1
Power Tolerance (Wp)	-0/+5	-0/+5

Electrical data (NOCT):		
800 W/m ² NOCT AM 1.5 Power Pmax (Wp)	206.1	208.4
800 W/m ² NOCT AM 1.5 Nominal Voltage Umpp (V)	29.5	29.6
800 W/m ² NOCT AM 1.5 Open Circuit Voltage Uoc (V)	35.35	35.40
800 W/m ² NOCT AM 1.5 Short Circuit Current Isc (A)	7.77	7.82
Relative Efficiency Reduction at 200 W/m ² (%)	1.5	1.5

Temperature coefficient:		
NOCT (°C)	44.1	42.2
Tempcoeff Isc (%/°C)	+0.041	+0.063
Tempcoeff Voc (mV/°C)	-122	-136
Tempcoeff Pmpp (%/°C)	-0.411	-0.449

25 year linear power warranty by IBC SOLAR



¹⁾ The 15 year product warranty is only valid for installations within Europe and Japan. The warranty requires installation according to the valid installation instructions. Standard test conditions: 1000 W/m² irradiation with a spectral distribution of AM1.5 and a cell temperature of 25°C. 800 W/m², NOCT. Information according to EN 60904-3 (STC). All values according to DIN EN 50380. Errors and changes reserved.

The precise conditions and content can be taken from the respectively valid version of the product and power warranty, which you can obtain from your IBC Premium Partner.

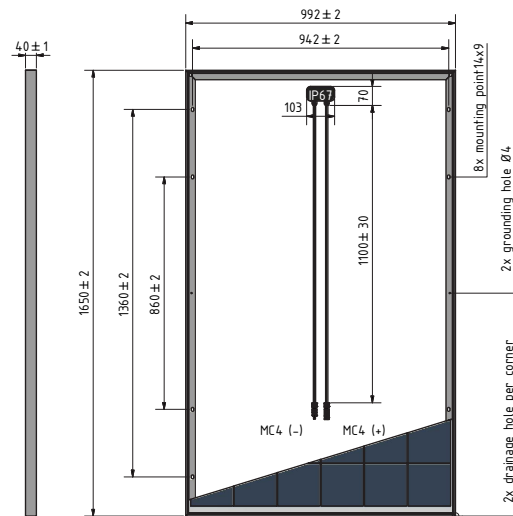
²⁾ Loads according to IEC 61215-2:2016, max. design load

Operating conditions:	
Max. System Voltage (V)	1000
Application Class	A
Reverse Current Ir (A)	20
Current value string fuse (A)	15
Fuse protection from parallel strings	4

Mechanical properties:	
Dimensions (L × W × H in mm)	1650 × 992 × 40
Weight (kg)	19.5
Max. Test load, Push/Pull (Pa)	5400/2400
Max. Design load ² , Push/Pull (Pa)	3600/1600
Front sheet (mm)	3.2 (low-iron photovoltaic glass and anti-reflective coating)
Frame	anodized aluminium, sturdy hollow-chamber frame
Cells	6 × 10 polycrystalline silicon cells
Connection type	MC4 (IP65)

Warranties and certification:	
Product warranty	15 years ¹
Power warranty	25 years, linear
Certification	IEC 61215, IEC 61730-1/-2, ISO 9001, ISO 14001, OHSAS 18001

Packaging information:	
Number of modules per pallet	27
Number of pallets per 40' container	28
Number of pallets per lorry	30
Dimensions incl. pallet (L × W × H in mm)	1695 × 1145 × 1150
Gross weight incl. pallet (kg)	577
Stackability per pallet	3-fold



Presented by: